

Simple Acoustics Safe Spaces & Calm Corners

Benefits of a Safe Space POD

With its modular design, the innovative structure allows for flexibility and adaptation to various spaces. Schools can easily assemble these booths without the need for specialised contractors, promoting autonomy and ownership. Due to their lightweight design, they are moveable and easy to relocate to meet changing requirements. Their customisable designs allow schools to tailor the aesthetics and functionality to reflect their unique identity and specific needs. Its versatility makes them ideal for use in halls, corridors, or classrooms, providing quieter, more conducive learning environments.

Improved Speech Clarity

Our Pods reduce background noise and reverberation, enhancing speech understanding, allowing for clearer communication between individuals. This is especially crucial for those pupils with hearing impairments or sensory needs.

Enhanced Focus and Concentration

By effectively separating learners from external distractions and mitigating the disruptive effects of classroom noise, these Pods foster enhanced focus and concentration. This supportive environment allows students with Special Educational Needs and Disabilities (SEND) to engage more fully in lessons and activities, ultimately improving their learning outcomes. Embedding these Pods as part of a school's provision, is a proactive step towards creating an inclusive and conducive educational atmosphere for all students.

Support for Speech and Language Development

A simple acoustic Pod offers a controlled environment that significantly enhances specialised speech therapy and language activities. It minimises distractions caused by excessive noise, fostering a conducive atmosphere for students with communication difficulties. The enclosed space allows for focused practice, promoting confidence in speech and language skills.

Promotion of Independence and Confidence

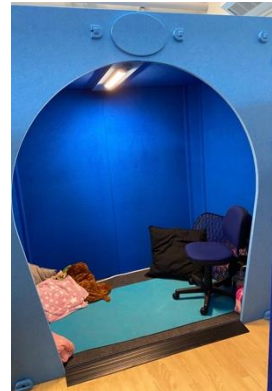
Provides a quiet sanctuary. A 'safe space' free from the distractions of noisy environments. This designated space fosters autonomy, encouraging all students to take charge of their learning, this independence significantly boosts their confidence, empowering them to engage more fully in their learning experiences. Consequently, the Pod becomes a valuable resource in promoting personal growth and academic success.

Designed to fit your school

With Corner size, Mid and large pods covering most requirements we also understand that no two schools are alike so please do get in touch with any special requirements you may have we are always happy to help. With an array of colour combinations and print options available for your creative concepts, alongside sensory enhancements such as lights, speakers, weighted blankets and acoustic curtains and doors, the possibilities are truly limitless. Elevate your students' learning environment with our tailored solutions.

A review of Simple Acoustics Safe Space

- *With 29 years in the profession, including over 10 years as a SENDCo and a most 7 years as a Headteacher, I welcome the opportunity to express my heartfelt appreciation for the introduction of the acoustic pod, especially in the context of the ongoing building works within our school. Classrooms, by their very nature, can be noisy, bustling spaces, filled with the sounds of collaboration and engagement but with the addition of constant machinery and building works, this can quickly become overwhelming and detrimental to some children (and adults).*
- *As a Headteacher, it is not only crucial, but my responsibility, to foster inclusive practice, ensuring that all my pupils receive the support they need to thrive academically and socially. The use of the acoustic pod has helped me achieve this fundamental aim. It has provided appropriate acoustic conditions for my most vulnerable children. I have witnessed the impact first-hand, noting a significant acoustic absorption that minimises background noise and reduces reverberation. This thoughtfully designed space has transformed the educational landscape for one particular pupil, allowing them to focus and engage without the anxiety of excessive noise levels.*
- *Moreover, the acoustic pod promotes a positive learning experience by effectively reducing noise stressors and distractions. My staff using the pod, report an increase in the pupil's ability to concentrate, which in turn enhances their overall learning outcomes and wellbeing. This purposefully crafted environment allows them to participate fully in lessons, interact meaningfully with others, and enjoy the process of learning.*
- *I am genuinely astounded by the impact that the acoustic pod has had on our school community. It stands as a testament to our commitment to fostering an inclusive educational environment where every child can access the highest quality of learning. As we look towards the future, I am grateful for the resources invested in this initiative and optimistic about the continued positive effects on our learners with any barriers to their learning including children with ASD, ADHD, sensory needs and hearing loss. Its resourcefulness and adaptability have yet to be explored but I feel will be endless.*
- **Mrs Roberts (Headteacher / SENDCo) 2025**



Benefits of using our Safe Space Pods

Direct Impact on Pupils' Learning & Wellbeing

Provides a quiet, controlled space that reduces distractions and anxiety, enabling pupils with hearing impairments or SEND to engage more fully. Our early findings show this can significantly improve focus, attainment and wellbeing — especially for pupils with ASD, ADHD, SEMH, or sensory processing needs.

Alignment with SEND Code of Practice

Demonstrates a school's proactive commitment to statutory duties by making reasonable adjustments for pupils with additional needs. The pod supports flexible use — from 1:1 intervention to small group work or as a quiet retreat — aligning directly with accessibility requirements.

Practical Benefits

Portable and versatile, the pod can be adapted for many purposes, including as a safe space, sensory retreat or intervention room. Its compact design makes it especially valuable in smaller schools where space is limited and bespoke options allow for classroom-specific solutions.

Evidence of Effectiveness

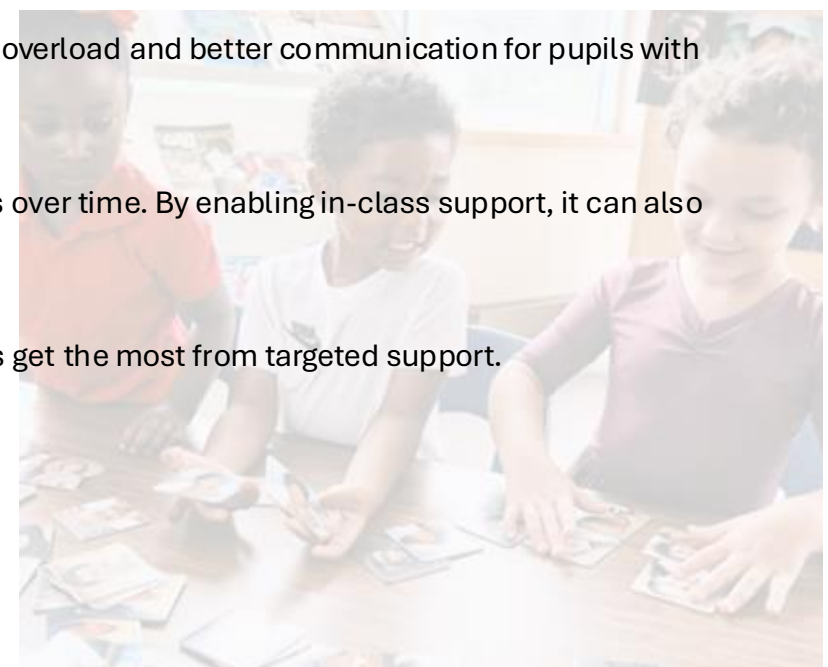
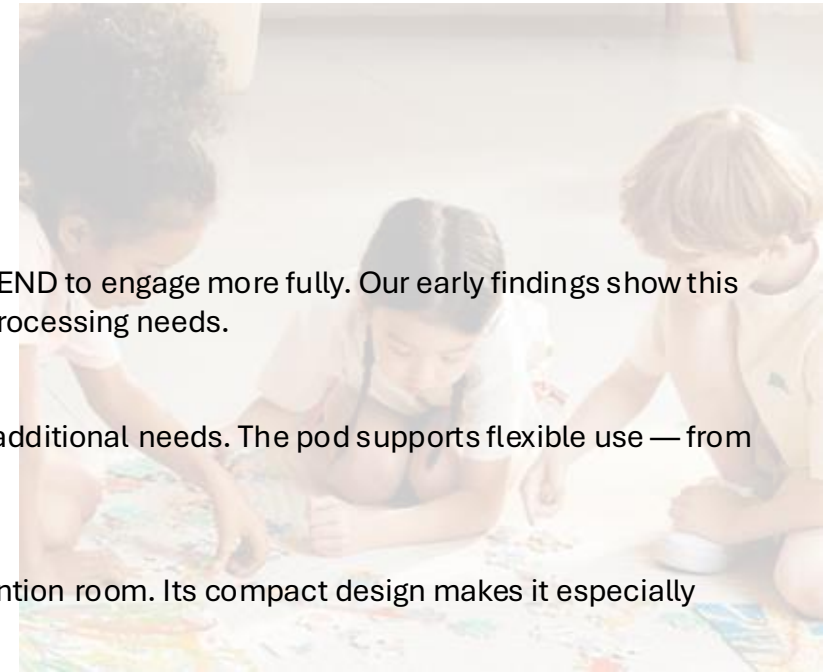
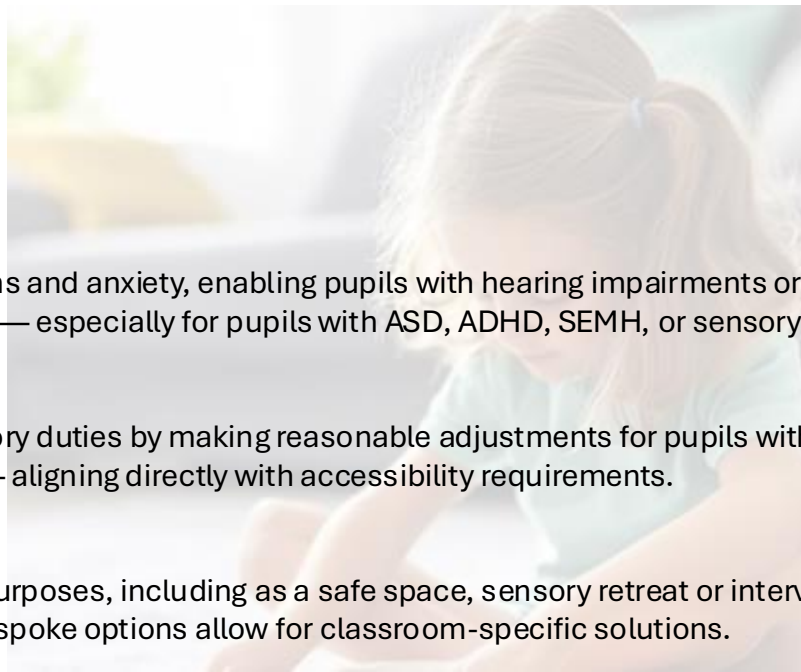
Schools already using acoustic pods, report positive outcomes: improved concentration, reduced incidents of sensory overload and better communication for pupils with SEND.

Cost-Effectiveness & Value for Money

Built to last, the pod is a durable, multifunctional investment that continues to meet the needs of a wide range of pupils over time. By enabling in-class support, it can also reduce reliance on expensive external provision.

Support for Staff

Gives staff a distraction-free environment to deliver interventions with greater fidelity and impact, helping ensure pupils get the most from targeted support.

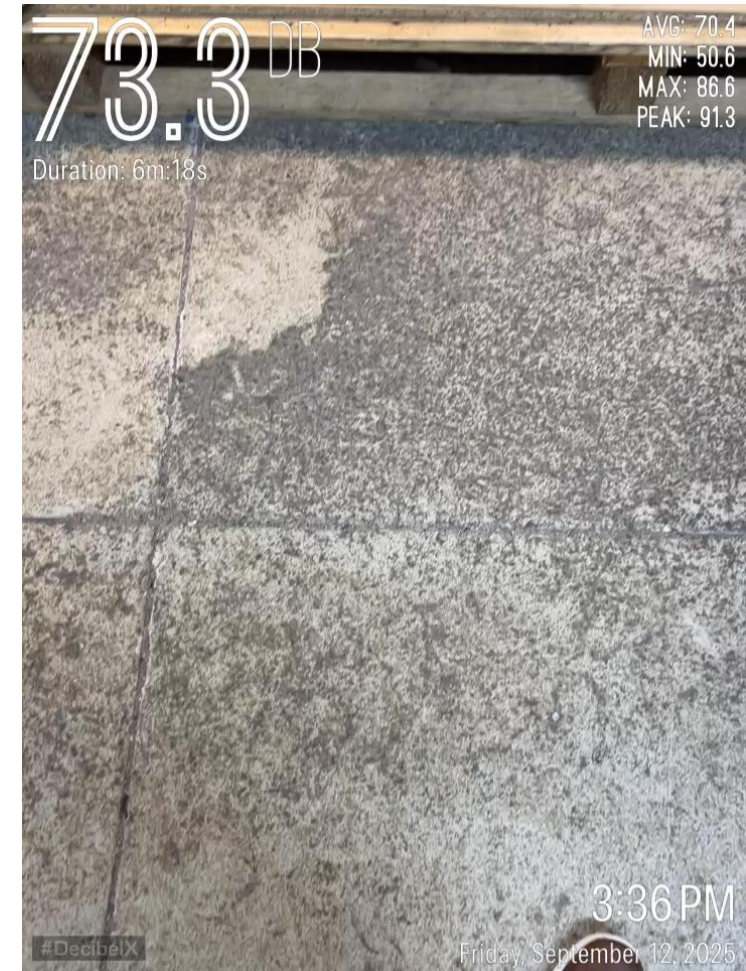




- The acoustic pod has now been relocated to support two pupils in Year 1. Both children are currently on the GDA pathway, awaiting paediatric assessment for ASD and already receive funding for a 1:2 member of the support staff.

- The pod has provided a crucial "quiet and safe space" in the classroom that is free from distraction which is a vitally important element of classroom provision for our two young pupils. It has created a calm, structured environment where the pupils can work with their support (1:2) without being overwhelmed by sensory input. The change in both children has been profound. One child struggled to attend school on a morning with his mother commenting daily that, "It has been a challenge to get him in today." This same parent recently caught the SENCO at the end of the school day to say that "His new 'safe space' is working so well! He ran around the playground today!"

- The second child struggles enormously during unstructured times with lunchtime being a particular trigger. Now that he knows he goes straight into the Safe Space, he is joining lessons far more regulated and accessing his learning, notably quicker than before.



Corner Pod tested in factory with background noise, then showing reduction when entering the Pod.

Play me loud on a PC Please.